

# Ba-Ti (Barium-Titanium)

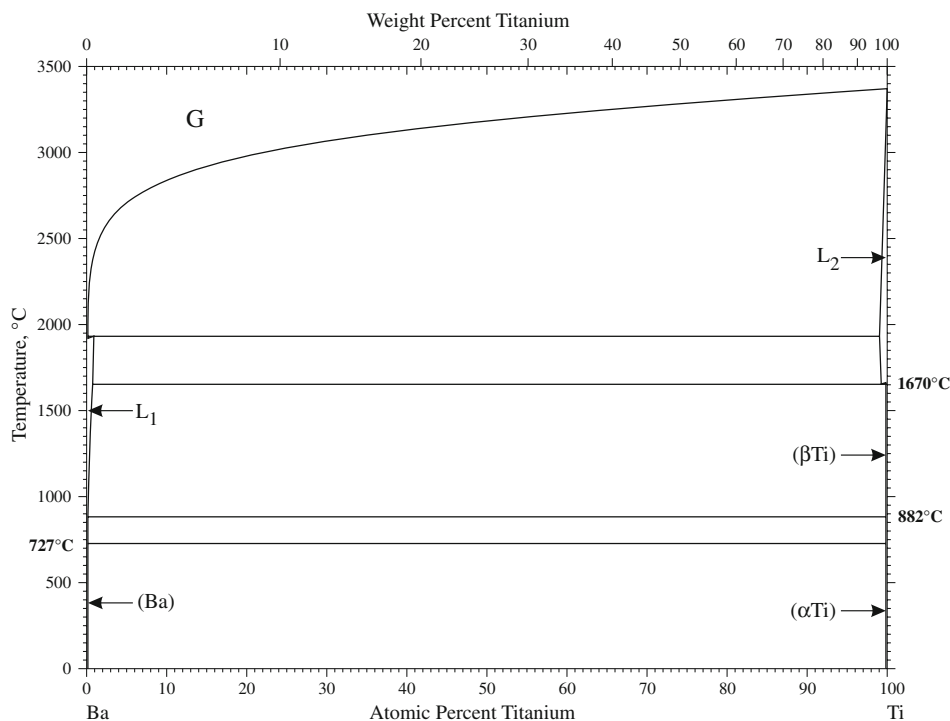
H. Okamoto

The Ba-Ti phase diagram in [Massalski2] was redrawn from [1987Mur]. It was a simple diagram showing only that Ba and Ti are almost immiscible in the liquid and solid states.

Figure 1 shows the Ba-Ti phase diagram calculated by [2007Sha]. The first principles calculation was employed in determining the thermodynamic parameters of the phases involved.

## References

- 1987Mur:** J.L. Murray, The Ba-Ti (Barium-Titanium) System, *Phase Diagrams of Binary Titanium Alloys*, J.L. Murray, Ed., ASM International, Metals Park OH, 1987, p 38-39
- 2007Sha:** S. Shang, Z.J. Liu, and Z.K. Liu, Thermodynamic Modeling of the Ba-Ni-Ti System, *J. Alloys Compd.*, 2007, **430**, p 188-193



**Fig. 1** Ba-Ti phase diagram